

## SPECIFICATION

### BODY

Models LLL18, LLL28, LLL45, LLL60, LLL80, LLL150 and LLL200:  
Cast from high grade LM4 aluminium with high proof and tensile strength with excellent machining properties.

### DISC SPRINGS

To German standards DIN2093 and 2092. This allows for repeatability of set point of within 1%.

### DIMENSIONS

A compact load cell that when fitted does not affect the height of lift.

### GUIDES

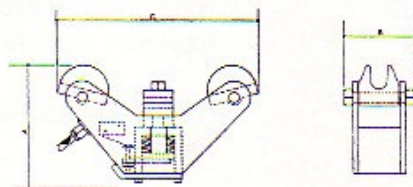
Cast from LM4 aluminium. Guides provide a higher degree of accuracy due to the increased contact surface between the guides and crane/hoist rope.

### LIMIT SWITCH

A heavy duty microswitch manufactured to EC specifications able to work up to 220 volts AC

### PAINTING SPECIFICATION

Anti corrosion cleaned to remove surface scale, powder coated and electrostatically applied to a dft. of 50-75 microns, oven post cured at 200°C for 20 minutes.



MODEL	MAX. LOAD	HEIGHT A	WIDTH B	LENGTH C	WEIGHT	ROPE DIAMETER
LLL18	1400Kg	100	60	140	1,3Kg	5-9 & 10-13mm
LLL28	2400Kg	100	70	190	1,5Kg	10mm - 14mm
LLL45	4500Kg	150	90	250	3,6Kg	13-16 & 16-20mm
LLL60	6000Kg	150	90	250	3,8Kg	20mm - 24mm
LLL80	8000Kg	215	125	375	7,0Kg	20-26 & 28-32mm
LLL150	15000Kg	215	125	375	7,3Kg	26mm - 36mm
LLL200	20000Kg	215	125	375	7,5Kg	to suit

**IMPORTANT NOTE:** Above rope loads for use on class 1 & 2 factory duty cranes used in accordance with BSS 466 of 1984, M5 rating. Consult factory for class 3 & 4 heavy duty applications.